



KANOMAX
The Ultimate Measurements

MODEL.6715
DATA ACQUISITION SOFTWARE
INSTRUCTION MANUAL



01001

1406

Note:

1. Specifications and the related details in this manual will be subject to change along with the software version upgrade.
2. Working principle: one software corresponding to one PC.

TABLE OF CONTENTS

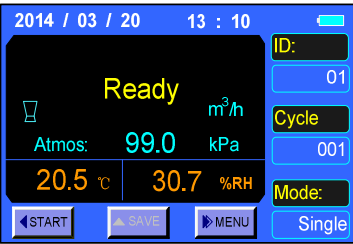
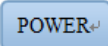
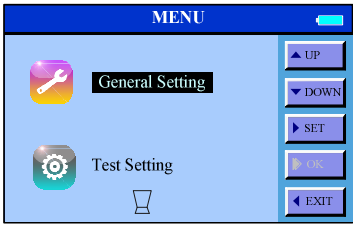
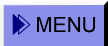
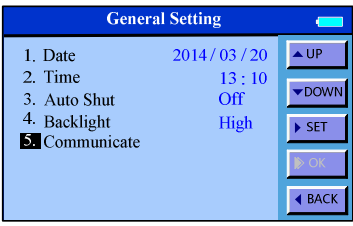

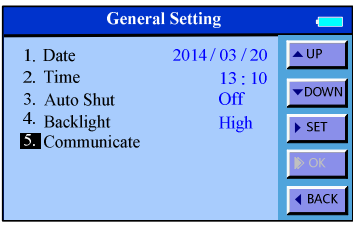

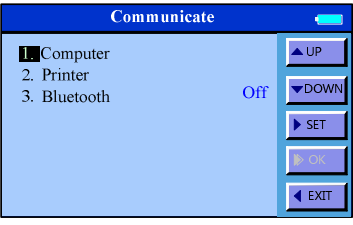

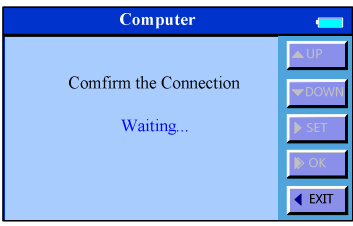
1. SUMMARY	4
2. Software installation:	6
3. How to use the software	9
3.1 Start.....	9
3.2 Data download.....	10
3.3 Data Hiding.....	12
3.4 Flow Unit switch	12
3.5 Differential Pressure unit switch:.....	13
3.6 Velocity unit switch:	13
3.7 Temperture unit switch:.....	14
3.8 Atmosphere unit switch:	14
3.9 Data Save	15

1. SUMMARY

This manual explains how to upload the data with the computer software. The data stored in the flash memory will be read and transferred, including: Air flow rate, Differential pressure, Velocity, Temperature, Humidity, Atmosphere, and so on. Then these records will be saved in Microsoft office Excel (*.CSV) compatible file format.

Instrument settings:

1) Communication settings

Display Shows	Operating Key	Explanation
		Press "POWER" to enter the main interface.
		Press and hold for 2 seconds to enter "MENU".
		Select option "General Setting" and press "SET"
		Under "General Setting", press "DOWN" to enter the "Communicate"
		Under "Communicate", press "SET" to enter the "Computer"
		The display will then indicate: "Confirm the Connection Waiting..."

2) Connection illustration for reference:

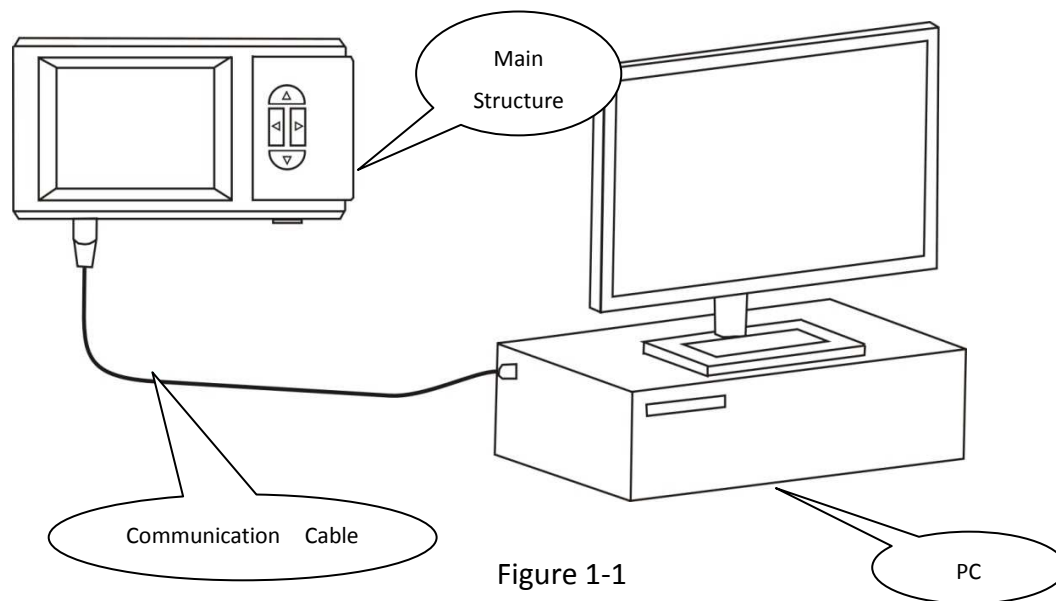


Figure 1-1

3) Software support:

Item	content
Operating system	Microsoft Windows XP, Microsoft Windows7
Language	English or Simplified Chinese
Communication	USB connection with PC

4) PC configuration request:

- .CPU IBM PC compatible machine with CPU Pentium II or above
- .Interface 1 USB port
- .Operating system Microsoft Windows XP, Microsoft Windows7
- .RAM $\geq 512\text{MB}$
- .HDD $\geq 1\text{GB}$ free disc space
- .Corresponding model: 6715

2. Software installation:

1) It's recommended that you turn off other application programs before the installation. Insert the CD-ROM into the disk driver. Then open



the folder  ,and double click  to begin the installation. The screen shown in Figure2-1 will appear. Press "Next".



Figure2-1

2) Then the screen shown in Figure2-2 appears. Press "Next"after you select a folder to install this software.

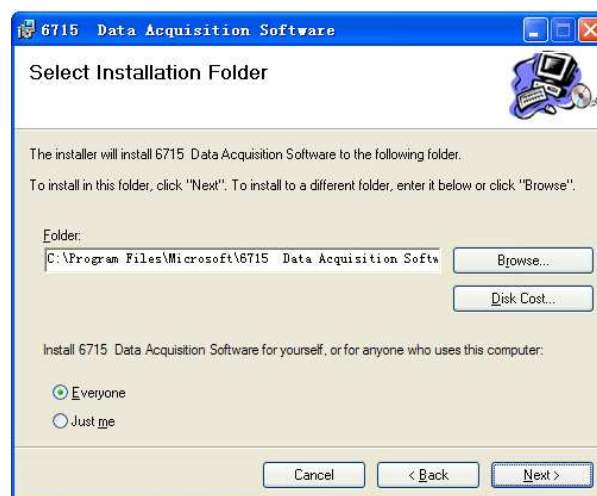


Figure2-2

3) Then the screen shown in Figure2-3appears. Press “Next”to start the installation.

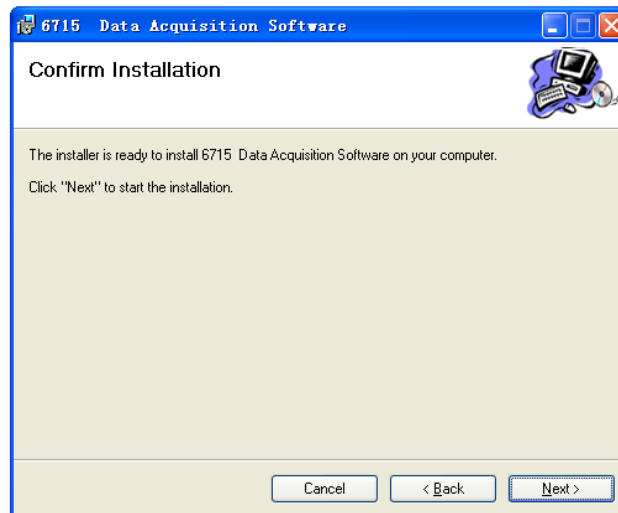


Figure2-3

4) Wait until the installation finishes, as shown in Figure 2-4.

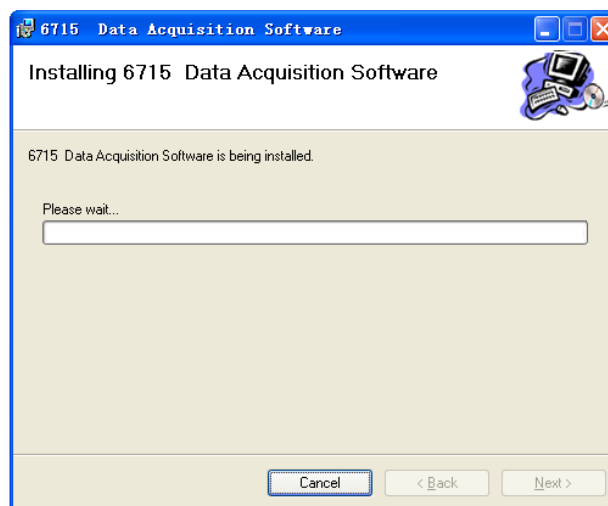


Figure 2-4

5) When the screen shown in Figure 2-5 appears,press “Close”.

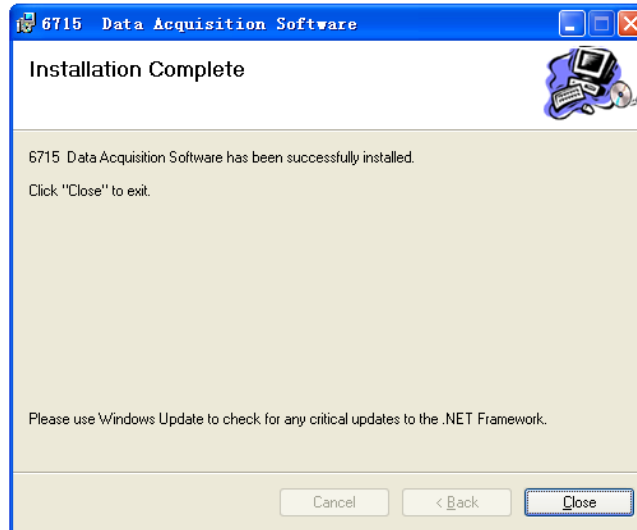


Figure2-5

6) After clicking“Close”, the icon shown in Figure 2-6 will be displayed on the screen indicating installation was successful.



Figure 2-6

3. How to use the software

3.1 Start



Double click the icon to start the data reading software. A sample of the opening software screen is shown for reference:

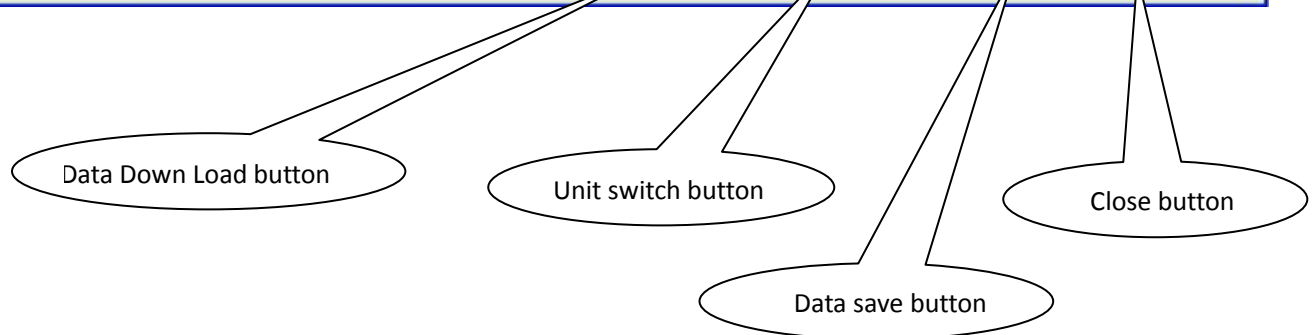
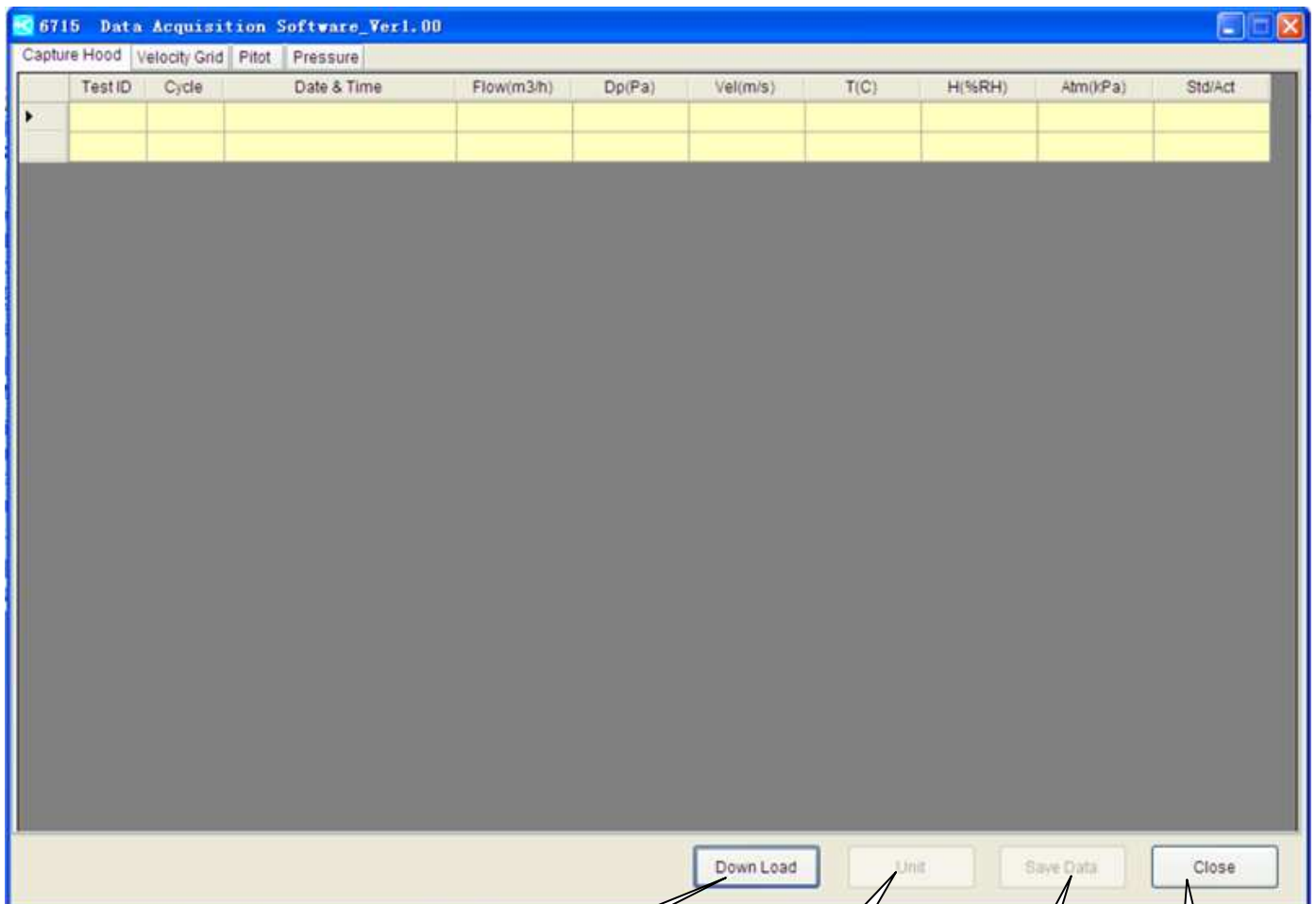


Figure 3-1

3.2 Data download

Connect a USB cable, click **【Down Load】** and the display will change as shown below:

Capture Hood Tool's Data

TestID	Cycle	Date & Time	Flow(m3/h)	Dp(inH2O)	Vel(m/s)	T(F)	H(%RH)	Atm(inHg)	Std/Act
01	001	2014-08-20 15:50:54	80	----	----	90.9	38.5	29.5	Std
	002	2014-08-20 15:51:04	57	----	----	90.9	38.2	29.5	Std
	003	2014-08-20 15:51:14	79	----	----	90.9	38.2	29.5	Std
	004	2014-08-20 15:51:24	62	----	----	90.9	38.3	29.5	Std
	005	2014-08-20 15:51:34	59	----	----	90.9	38.2	29.5	Std
	006	2014-08-20 15:51:44	51	----	----	90.9	38.2	29.5	Std
	007	2014-08-20 15:51:54	48	----	----	90.9	38.2	29.5	Std
	008	2014-08-20 15:52:04	0	----	----	90.9	38.4	29.5	Std
	009	2014-08-20 15:52:14	35	----	----	90.9	38.4	29.5	Std
	010	2014-08-20 15:52:24	35	----	----	90.9	38.4	29.5	Std
	011	2014-08-20 15:52:34	51	----	----	90.9	38.6	29.5	Std
	012	2014-08-20 15:52:44	75	----	----	90.9	38.6	29.5	Std
	013	2014-08-20 15:52:54	81	----	----	90.9	38.6	29.5	Std
	014	2014-08-20 15:53:04	94	----	----	90.7	38.4	29.5	Std
	015	2014-08-20 15:53:14	45	----	----	90.7	38.5	29.5	Std
	016	2014-08-20 15:53:24	82	----	----	90.7	38.7	29.5	Std
	017	2014-08-20 15:53:34	89	----	----	90.7	38.7	29.5	Std
	018	2014-08-20 15:53:44	64	----	----	90.7	38.9	29.5	Std
	019	2014-08-20 15:53:54	59	----	----	90.7	38.9	29.5	Std
	020	2014-08-20 15:54:04	96	----	----	90.7	39.1	29.5	Std
	021	2014-08-20 15:54:14	116	----	----	90.7	39.1	29.5	Std
	022	2014-08-20 15:54:24	127	----	----	90.7	39.2	29.5	Std
	023	2014-08-20 15:54:34	93	----	----	90.7	39.4	29.5	Std
	024	2014-08-20 15:54:44	84	----	----	90.7	39.4	29.5	Std

Down Load Unit Save Data Close

Figure 3-2

Velocity Grid Tool's Data

TestID	Cycle	Date & Time	Flow(m3/h)	Dp(inH2O)	Vel(m/s)	T(F)	H(%RH)	Atm(inHg)	Std/Act
01	001	2014-10-15 20:49:17	----	----	-3.11	----	----	29.7	Act
	002	2014-10-16 14:50:15	----	----	0.00	----	----	29.9	Act
	003	2014-10-16 14:50:25	----	----	0.11	----	----	29.9	Act
	004	2014-10-16 14:50:35	----	----	0.00	----	----	29.9	Act
	005	2014-10-16 14:50:45	----	----	0.00	----	----	29.9	Act
	006	2014-10-16 14:50:55	----	----	0.00	----	----	29.9	Act
	007	2014-10-16 14:51:05	----	----	0.00	----	----	29.9	Act
	008	2014-10-16 14:51:15	----	----	0.00	----	----	29.9	Act
	009	2014-10-16 14:51:25	----	----	0.00	----	----	29.9	Act
	010	2014-10-16 14:51:35	----	----	0.00	----	----	29.9	Act
	011	2014-10-16 14:51:45	----	----	0.00	----	----	29.9	Act
	012	2014-10-16 14:51:55	----	----	0.00	----	----	29.9	Act
	013	2014-10-16 14:52:06	----	----	0.00	----	----	29.9	Act
	014	2014-10-16 14:52:16	----	----	0.00	----	----	29.9	Act
	015	2014-10-16 14:52:26	----	----	0.00	----	----	29.9	Act
	016	2014-10-16 14:52:36	----	----	0.00	----	----	29.9	Act
	017	2014-10-16 14:52:46	----	----	0.00	----	----	29.9	Act
	018	2014-10-16 14:52:56	----	----	0.00	----	----	29.9	Act
	019	2014-10-16 14:53:06	----	----	0.00	----	----	29.9	Act
	020	2014-10-16 14:53:16	----	----	0.00	----	----	29.9	Act
	021	2014-10-16 14:53:26	----	----	0.00	----	----	29.9	Act
	022	2014-10-16 14:53:36	----	----	0.10	----	----	29.9	Act
	023	2014-10-16 14:53:46	----	----	0.00	----	----	29.9	Act
	024	2014-10-16 14:53:56	----	----	0.00	----	----	29.9	Act

Down Load Unit Save Data Close

Figure 3-3

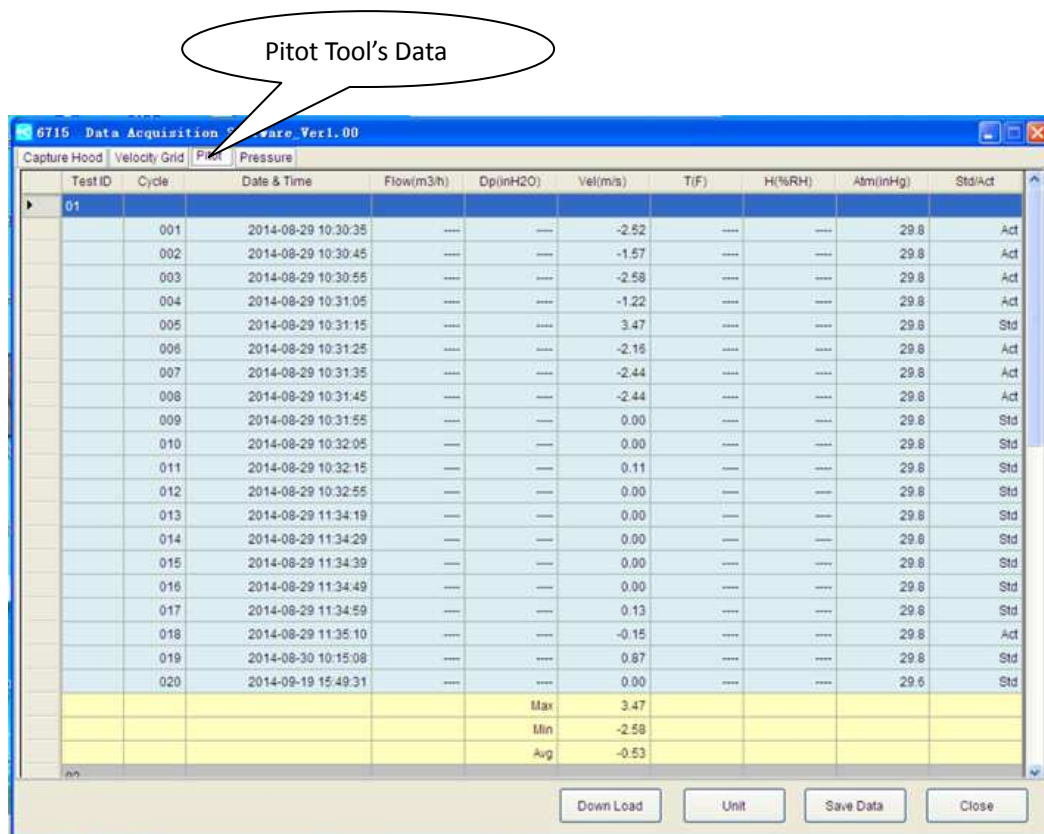


Figure 3-4

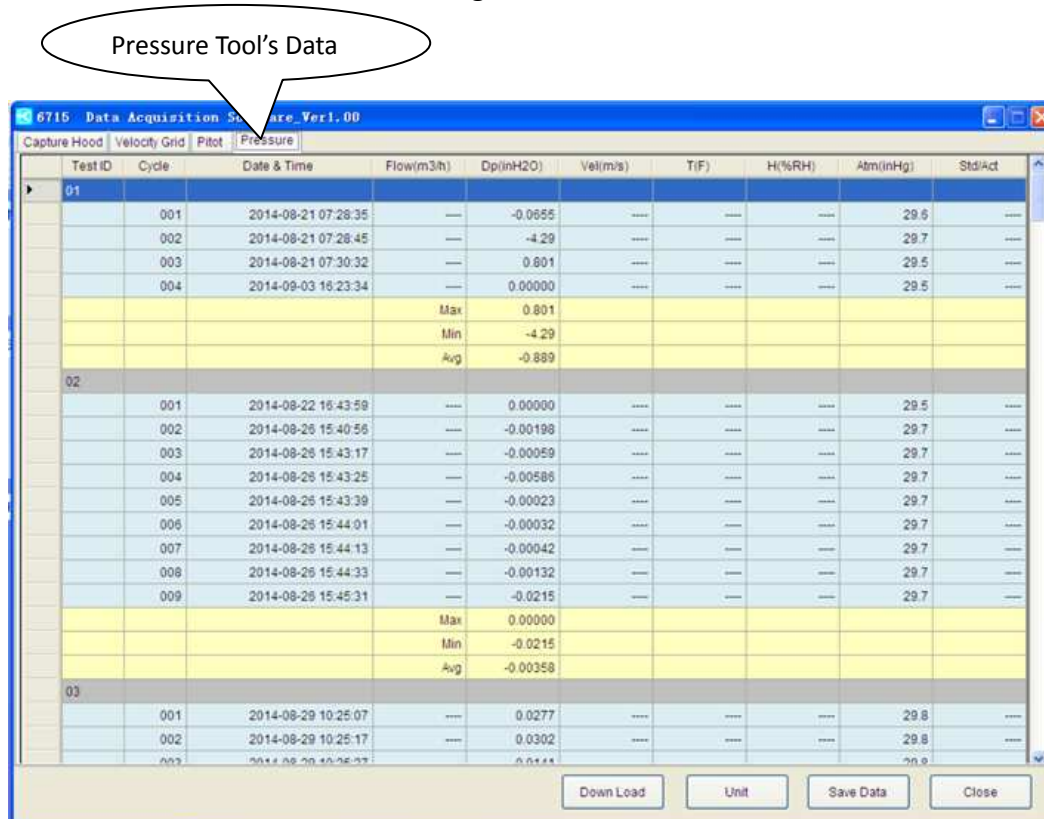


Figure 3-5

3.3 Data Hiding

Double click the gray area for hiding the small ID data,so you can easy see the bigger ID data.

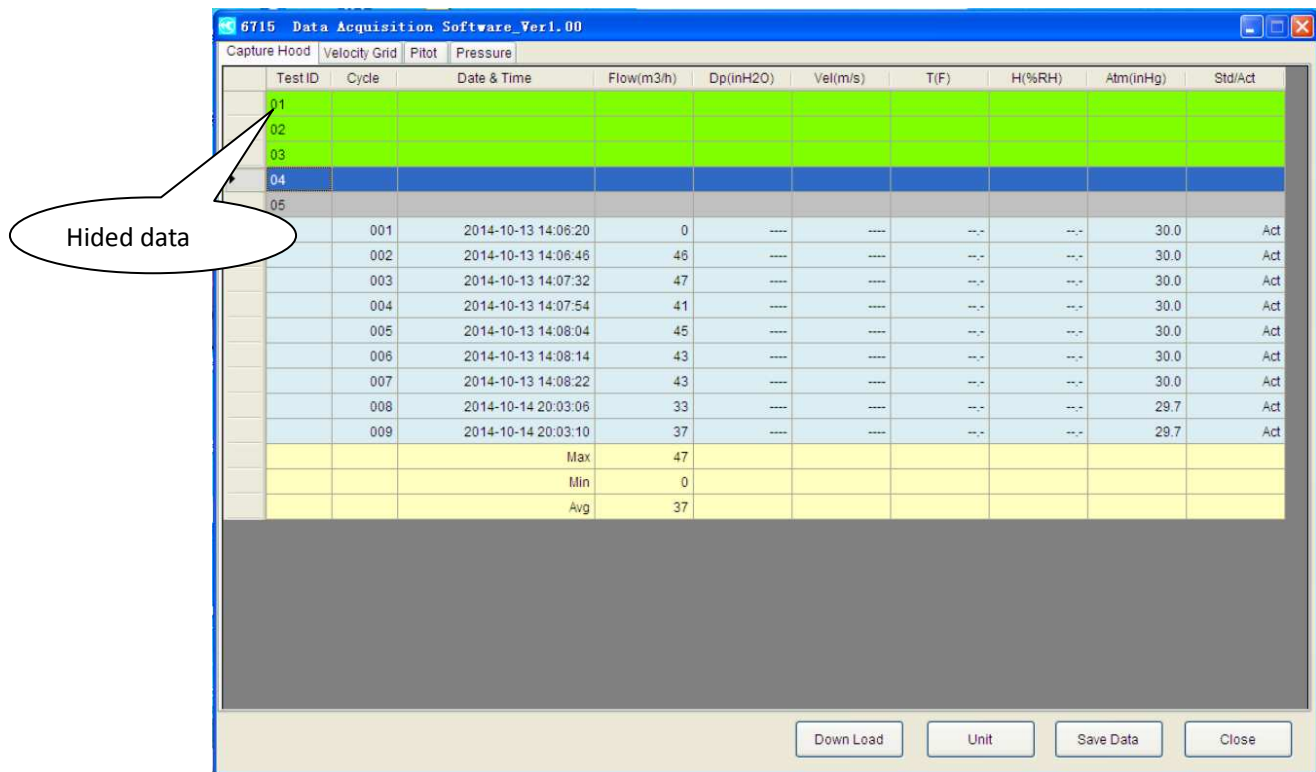


Figure 3-6

3.4 Flow Unit switch

Click **【Unit】** to change the displayed unit and the following box will appear:

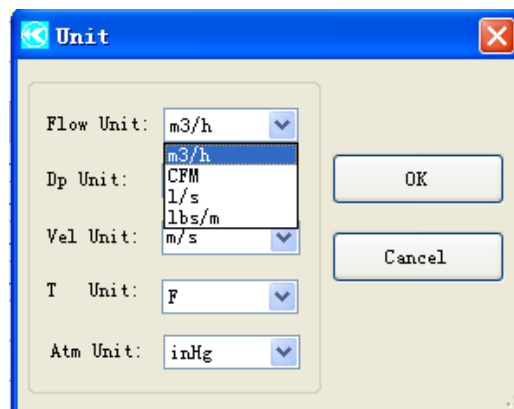


Figure 3-7

3.5 Differential Pressure unit switch:

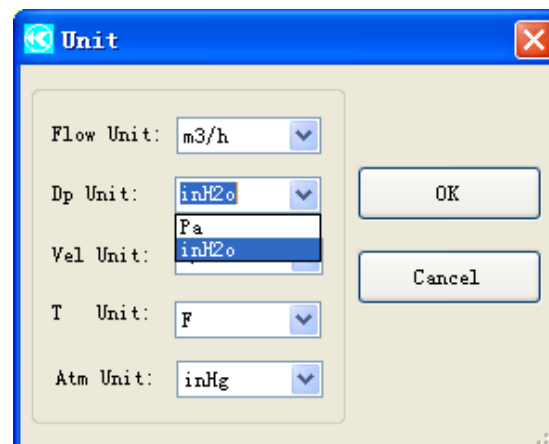


Figure 3-8

3.6 Velocity unit switch:

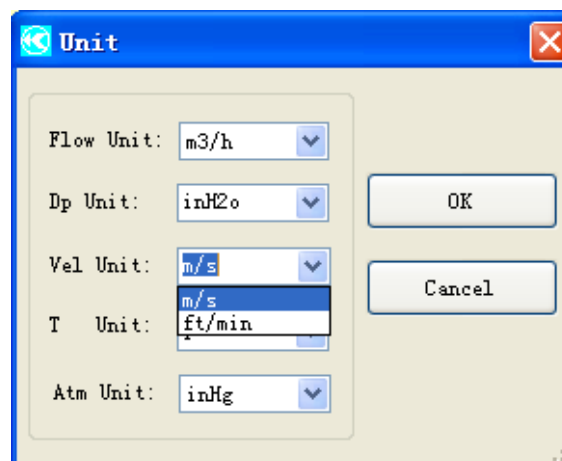


Figure3-9

3.7 Temperture unit switch:

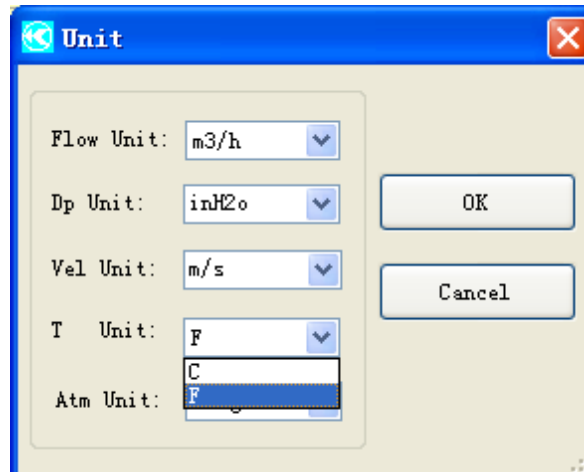


Figure3-10

3.8 Atmosphere unit switch:

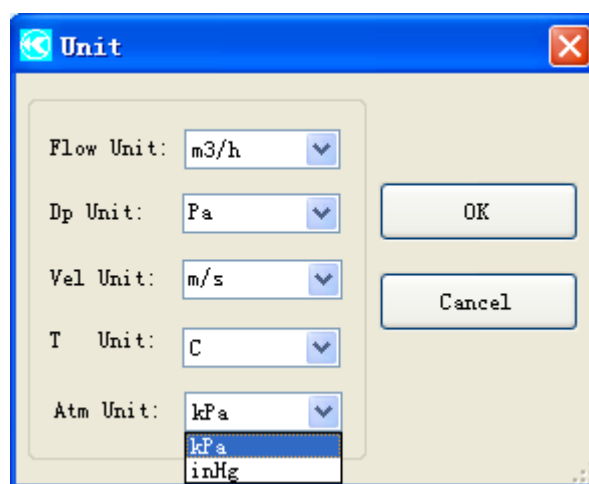


Figure3-11

3.9 Data Save

Click **【Save Data】** to save Capture Hood Tool's data and the following box will appear:

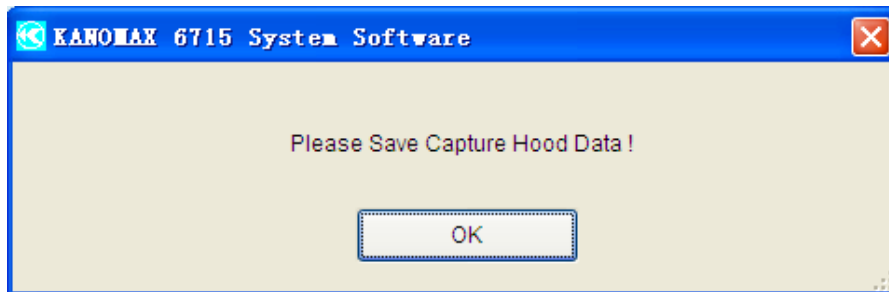
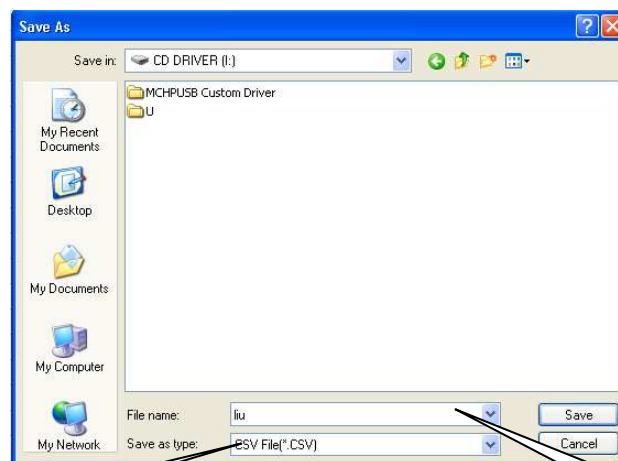


Figure3-12

You will be prompted to choose a location to save the data to as shown figure 3-13 below. Select a file name and location then click save to finish saving the data.



EXCEL file layout

Figure 3-13

File name

Then please save the Velocity Grid Tool's data if the tool has data and the following box will appear:



Figure 3-14

You will be prompted to choose a location to save the data to as shown figure 3-15 below. Select a file name and location then click save to finish saving the data.

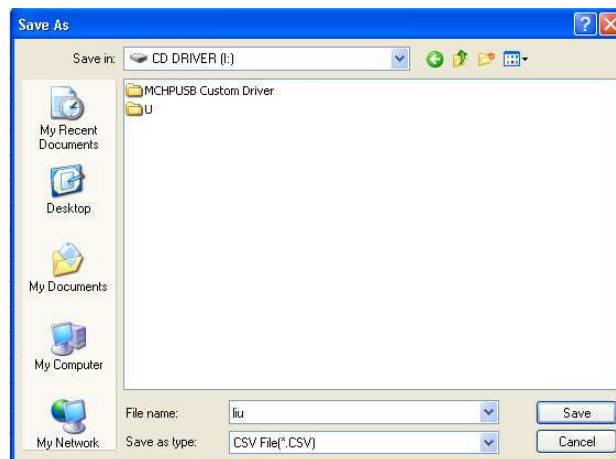


Figure 3-15

Then please save the Pitot Tool's data if the tool has data and the following box will appear:

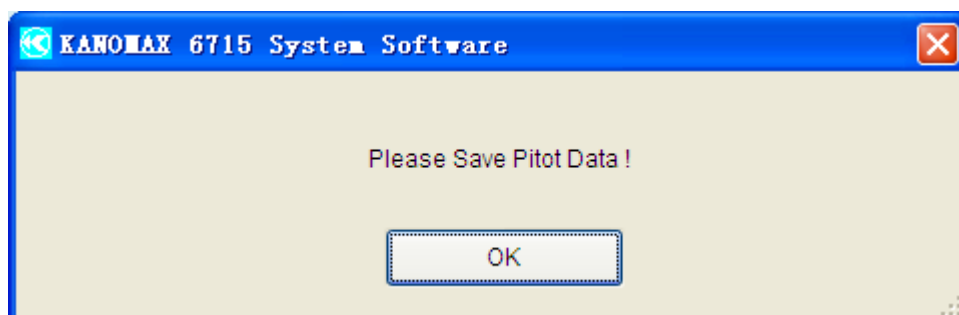


Figure 3-16

You will be prompted to choose a location to save the data to as shown figure 3-17 below. Select a file name and location then click save to finish saving the data.

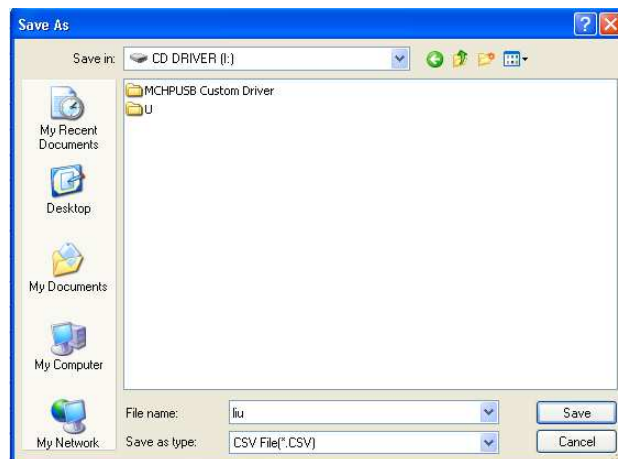


Figure 3-17

Then please save the Pressure Tool's data if the tool has data and the following box will appear:

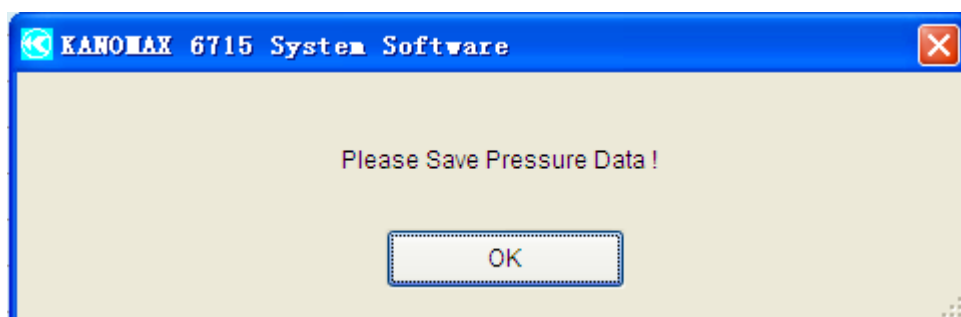


Figure 3-18

You will be prompted to choose a location to save the data to as shown figure 3-19 below. Select a file name and location then click save to finish saving the data.

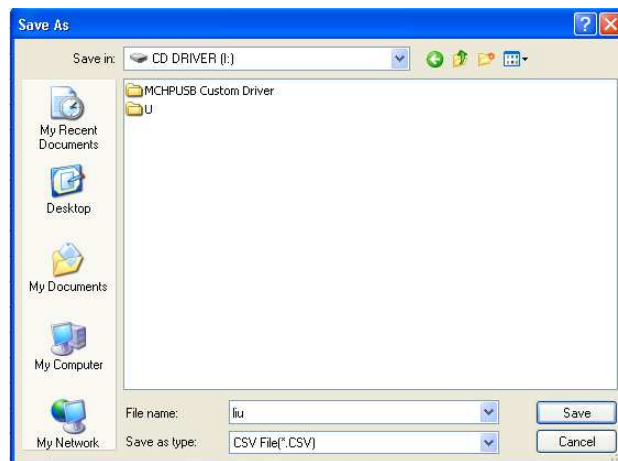


Figure 3-19